

Pregnant Women + Chemicals Don't Mix

Physical changes in pregnancy make women more susceptible to toxic chemicals

↑ **40%** increase
Volume of air inhaled/exhaled per minute

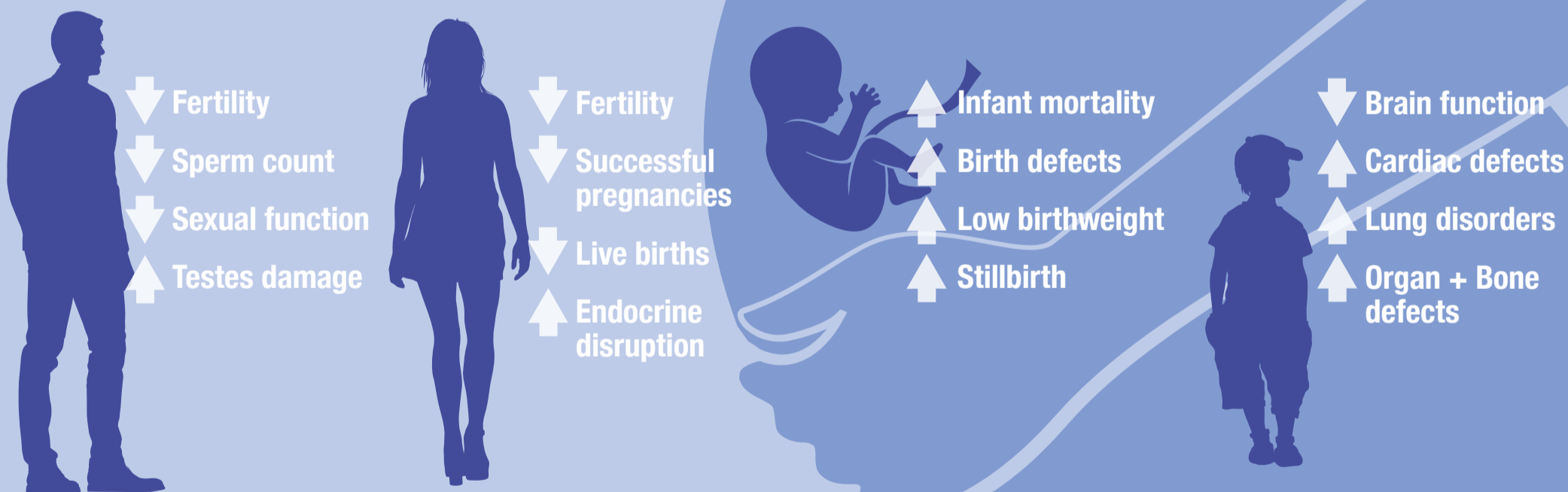
↑ **20%** increase
Oxygen consumption

↑ **50%** increase
Cardiac output

5 chemicals EPA is evaluating for risk are reproductive toxicants



Health hazards these chemicals are linked to include:



These conditions summarize data from all 5 chemicals. Please see citation details for which conditions are linked to which chemical(s).

EPA must not underestimate these risks

Citations at <https://prheucsf.blog/legislative-briefing/>